

STATE OF FLORIDA
 COUNTY OF MARTIN

I, MARSHA STILLER, CLERK OF THE CIRCUIT COURT OF MARTIN COUNTY, FLORIDA, HEREBY CERTIFY THAT THIS PLAT WAS FILED FOR RECORD IN PLAT BOOK 12, PAGE 80 OF MARTIN COUNTY, FLORIDA PUBLIC RECORDS THIS 22ND DAY OF APRIL, 1995.

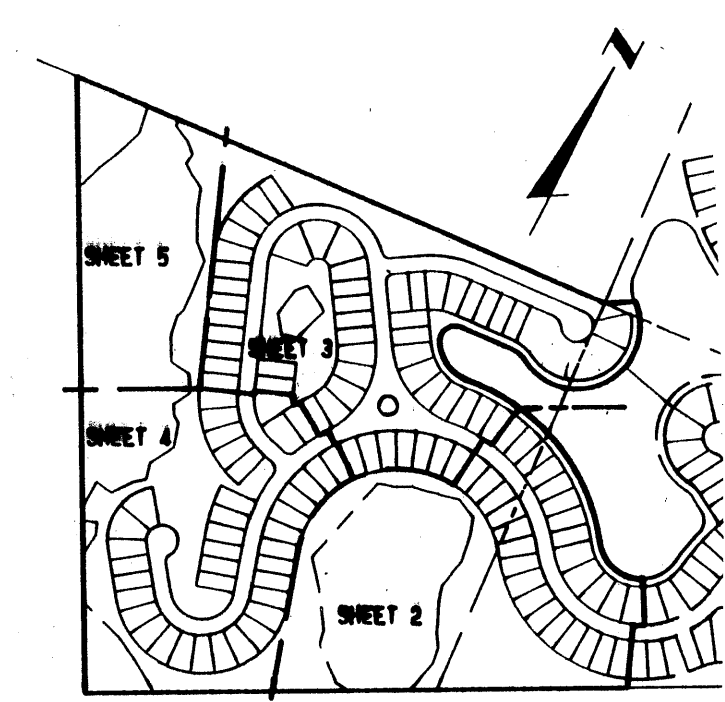
MARSHA STILLER, CLERK
 CIRCUIT COURT
 MARTIN COUNTY, FLORIDA

BY: _____
 DEPUTY CLERK

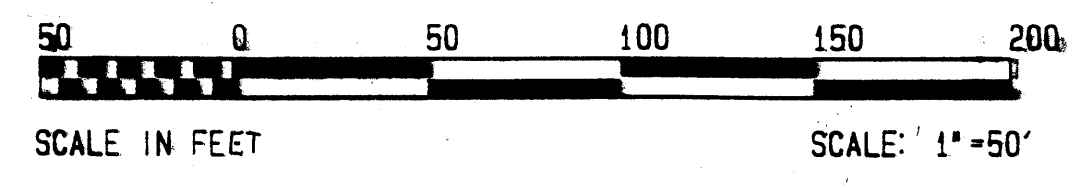
FILE NUMBER: 113-2227

**PLAT III OF
 MARINER VILLAGE, P. U. D. (R)**
 IN PART OF SEC. 30, TWP. 30S, RGE. 42E,
 SEC. 1, TWP. 30S, RGE. 41E,
 AND SEC. 8, TWP. 30S, RGE. 42E
 MARTIN COUNTY, FLORIDA

CUNNINGHAM & DURRANCE
 CONSULTING ENGINEERS, INC.
 WEST PALM BEACH, FLORIDA
 APRIL, 1995



KEY MAP



- DENOTES PERMANENT REFERENCE MONUMENT SET
- DENOTES PERMANENT REFERENCE MONUMENT FOUND
- DENOTES PERMANENT CONTROL POINT

MATCH LINE SHEET 5
 MATCH LINE SHEET 4

WETLAND PRESERVE AREA
 7.963 ACRES

WETLAND PRESERVE AREA
 0.073 ACRES

WETLAND PRESERVE AREA
 0.777 ACRES

UPLAND PRESERVE TRACT F
 29.504 ACRES

UPLAND PRESERVE AREA TRACT F

NORTH LINE OF GOMEZ GRANT AS RECORDED IN PLAT BOOK 4, PAGE 80 OF THE PUBLIC RECORDS OF PALM BEACH COUNTY, NOW MARTIN COUNTY.

* THE PRESERVE * PLAT NO. 3 AS RECORDED IN PLAT BOOK 12, PAGE 2 OF THE PUBLIC RECORDS OF MARTIN COUNTY.

S66°04'25"W 1679.89'

S66°04'25"W 1679.89'

MATCH LINE SHEET 4
 MATCH LINE SHEET 2

UNPLATTED
 WESTERLY LIMITS OF P. U. D.
 & PLAT LIMITS

